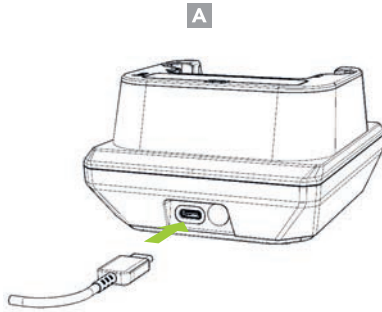


## Charging via USB Type-C

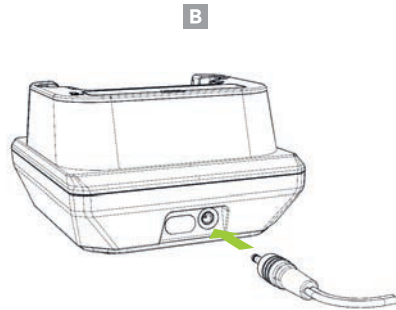
Use a genuine Samsung AFC adaptor for 9V fast charging. Use a minimum 5V/2A rated USB adaptor for 5V normal charging. (A)



\*Fast charging is only supported when using a genuine Samsung AFC charger.

## Charging via DC Connector

The 12V/2A DC power adaptor (Optional) supports 9V fast charging when the SKXPro is mounted on the charging cradle. (B)



## Additional Accessories

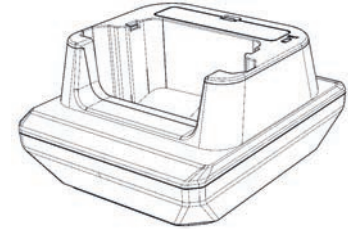
- ▶ 0.5W UHF Reader Companion
- ▶ 1.0W UHF Reader Companion
- ▶ 2000mAh Extended Battery Companion
- ▶ Pistol Grip Companion (battery optional)
- ▶ SKXPro Pistol Grip 1-Slot Charging Cradle
- ▶ SKXPro Pistol Grip 5-Slot Charging Cradle

# KOAMTAC

116 Village Blvd, Ste 305, Princeton, NJ 08540  
+1 609-256-4700 [p](#) | +1 609-228-4373 [f](#)  
[info@koamtac.com](mailto:info@koamtac.com) | [www.koamtac.com](http://www.koamtac.com)

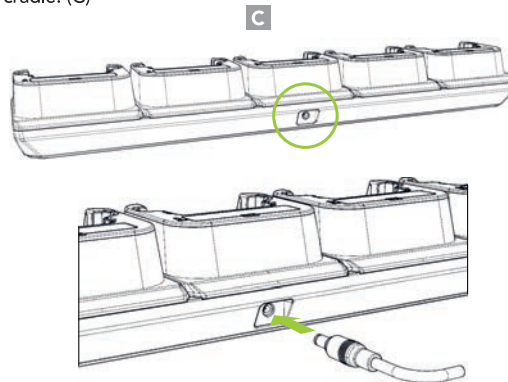
# KOAMTAC

SKXPro  
Charging Cradle Mini Guide



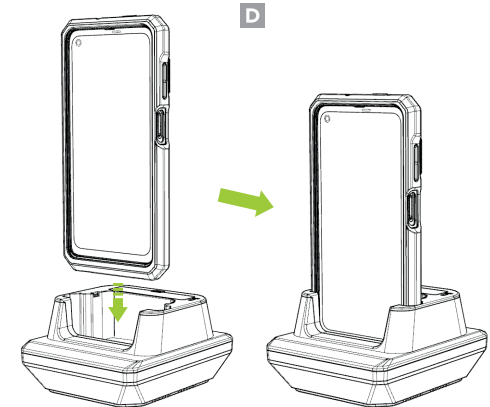
## 5-Slot Charging via DC Connector

The 12V/10A DC power adaptor supports 9V fast charging when the SKXPro is mounted on the 5-slot charging cradle. (C)



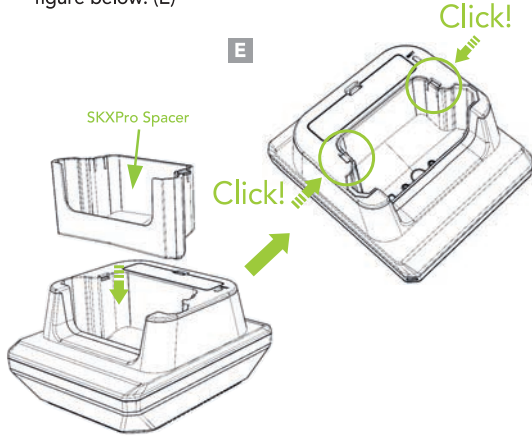
## Charging the SKXPro with Protective Boot

Insert SKXPro with Protective boot in to slot as shown below. (D)

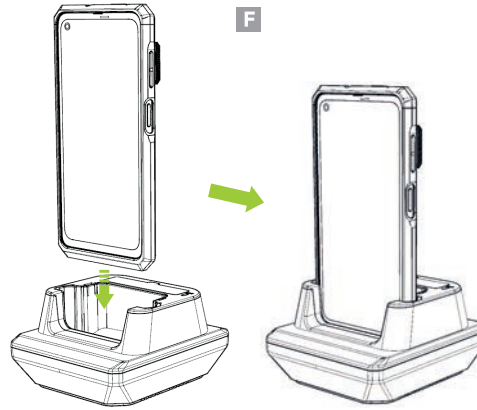


## Charging the SKXPro

2. Assemble the SKXPro spacer (Optional) as shown in the figure below. (E)

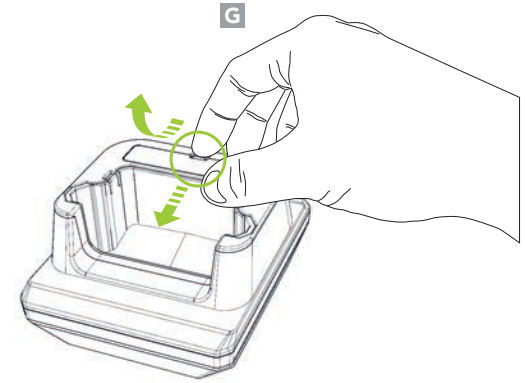


3. The SKXPro will now fit into the charging cradle with out protective boot. (F)



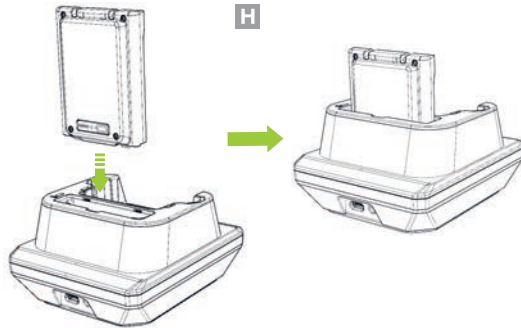
## Removing the Battery Cover

To remove, pull the hook on the battery cover forward and tilt it upwards. (G)

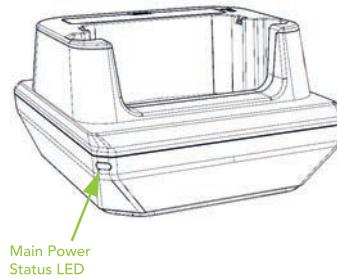


## Charging the SKXPro Extended Battery

Insert the battery into the extended battery slot on the cradle with the battery's charging LED indicator facing towards the back of the cradle. (H)

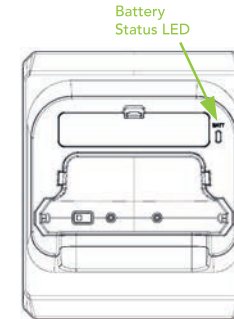


## Cradle Power LED Status



Green : Always on when the cradle is powered on

## Battery LED Status



- Green: Fully charged
- Orange: Charging
- Blinking Red: Charging Issue
  - Overheating
  - Charging fault
  - Foreign material inside