

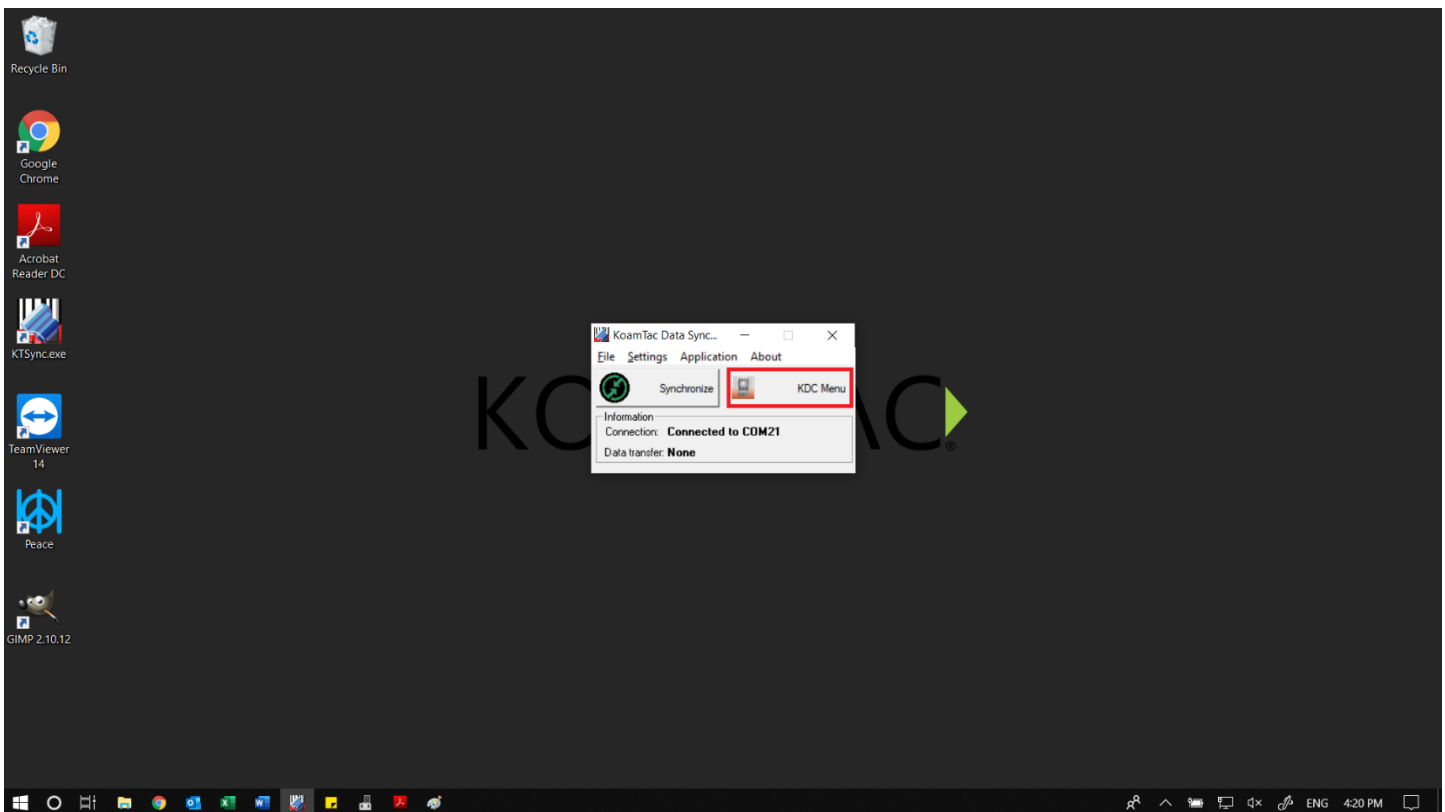
Changing Partial Data: Start Position

Requires: Windows PC, USB cable, KDC driver, KTSync application.

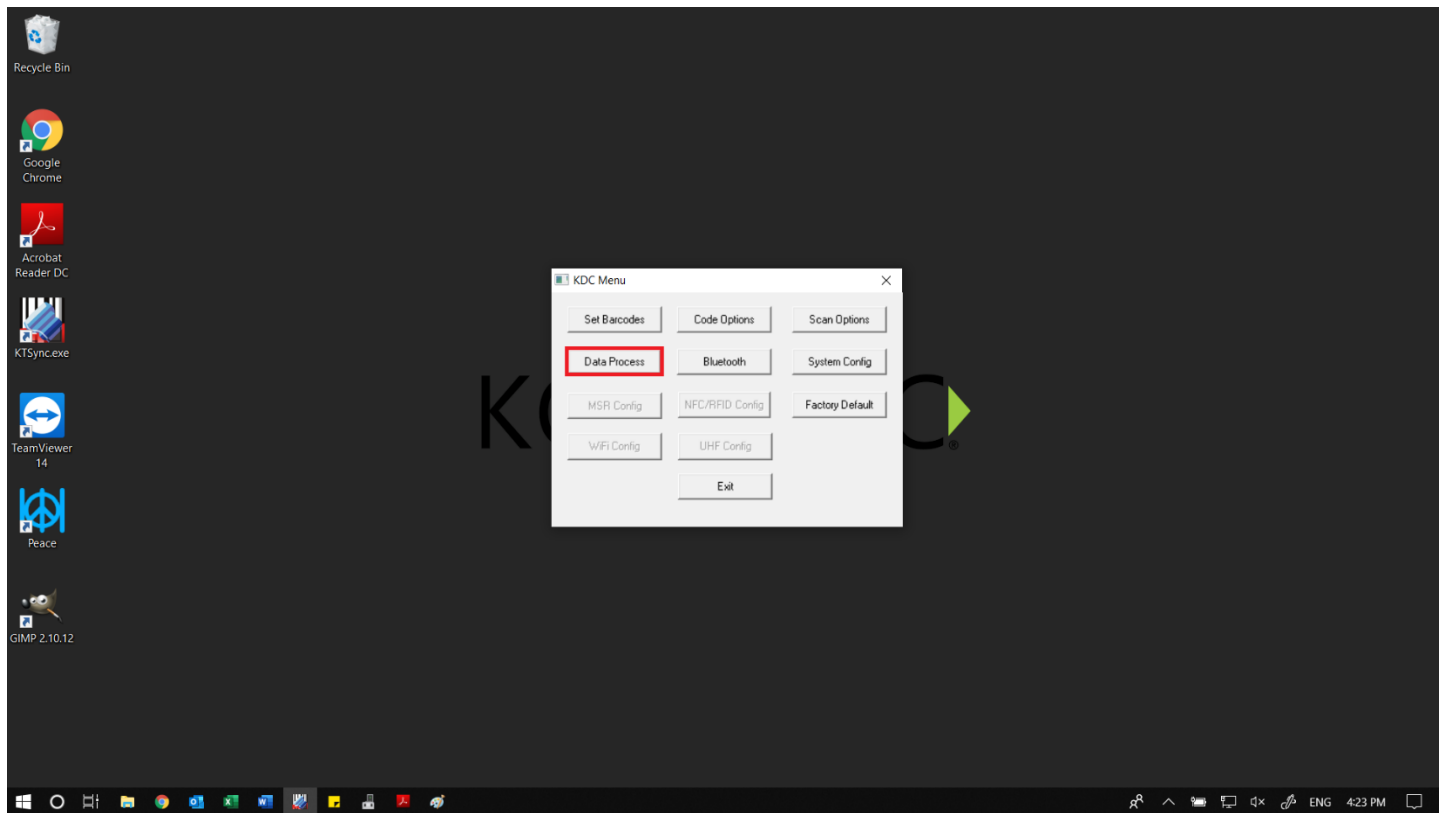
1. Download KDC driver at: <https://www.koamtac.com/downloads/drivers/>
 - Extract the .ZIP, run "Setup.exe" only.
 - Follow the instructions on the installation wizard.

2. Download KTSync at: <https://www.koamtac.com/support/downloads/applications/>
 - Select "KTSync," and click the download link "Windows XP/Vista/7/8/10 Standard."
 - Extract the .ZIP, run "Setup.exe" only.

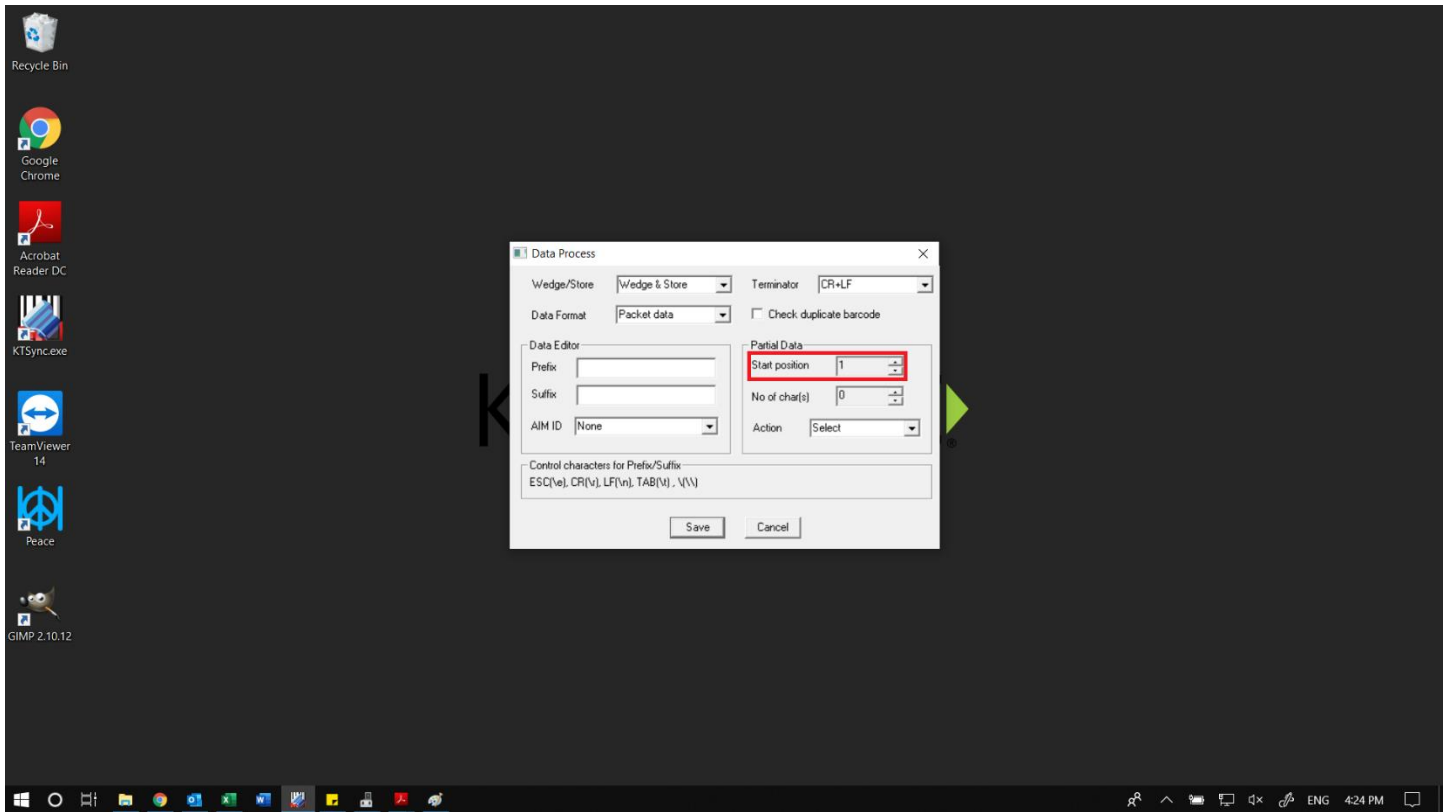
3. Connect to your KDC Scanner.
 - Plug in your USB Cable into both the computer and your KDC Scanner.
 - If KTSync does not automatically connect Select File >Connect >Make sure there is COM port in the dropdown >Select.



4. Go to "KDC Menu."



5. Proceed to "Data Process."



6. Below "Partial Data," you'll find "Start Position" and a selection box.
 - The default in this selection box is "1," and can be changed all the way up to "999."
 - You can also change the amount of "Chars" or Characters are visible when you scan. Default is "0," meaning the whole barcode will be displayed.