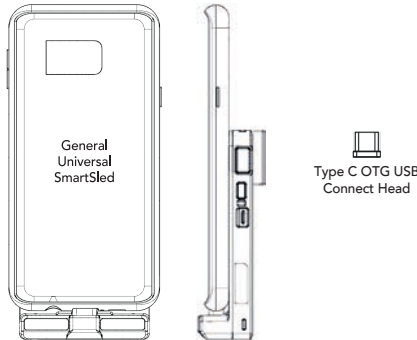


What's in the box?

- ▶ 1 x KDC470/475 General Universal SmartSled
- ▶ 1 x Magnetic OTG USB Connect Head (Type C)



Additional Accessories

- ▶ 1-Slot Charging Cradle
- ▶ 4-Slot Charging Cradle
- ▶ HF Companion
- ▶ 0.5W UHF Companion
- ▶ 1.0W UHF Companion
- ▶ Pistol Grip
- ▶ Extended Battery

KOAMTAC

116 Village Blvd, Ste 305, Princeton, NJ 08540
+1 609-256-4700 p | +1 609-228-4373 f
info@koamtac.com | www.koamtac.com

KOAMTAC

KDC470/475
General Universal SmartSled
Assembly Manual

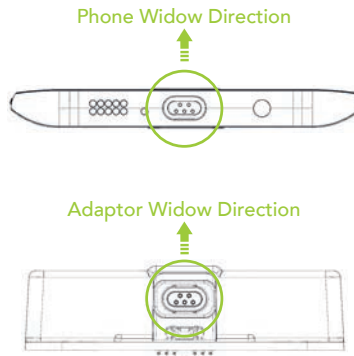


Assembly Instructions:

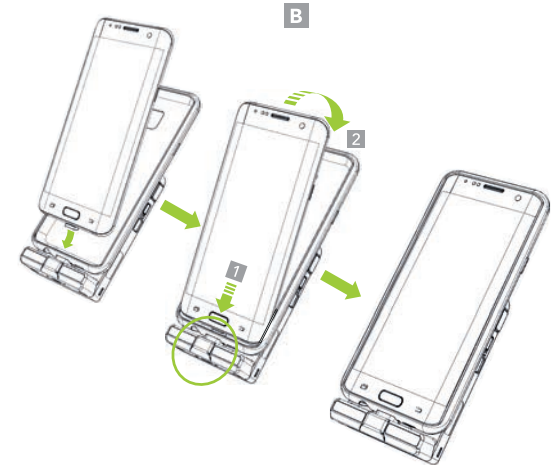
1. Attach the OTG USB Connect Head to the phone. (A)



2. Check the pin arrangement as shown in the image below because the OTG USB Connect Head is direction-sensitive.



3. Slide the phone into the General Universal SmartSled. (B)

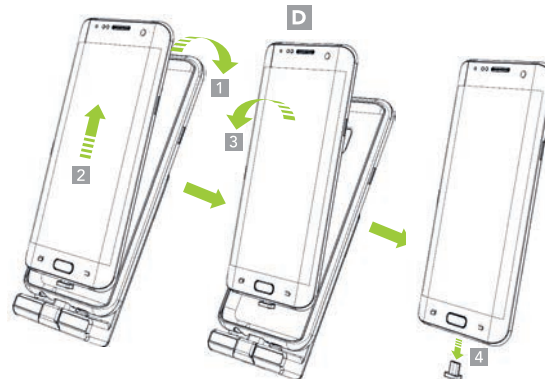


4. Inspect the connection between the General Universal SmartSled and previously installed OTG USB Connect Head. To test the connection, attempt to charge your device via USB or Charging Cradle - the device will begin charging if the connection is successful. (C)



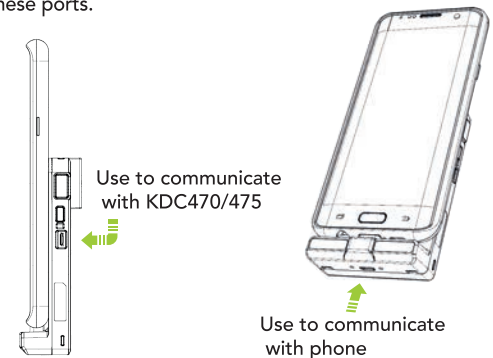
Removing Phone

Remove the phone from the case by peeling off the top edge of the General Universal SmartSled. Carefully slide the phone up and pull the phone upward. Remove the OTG USB Connect Head from the bottom of the phone. (D)



USB Port Usage

There is one Micro USB port on the side of the KDC470/475 and one Micro USB port on the bottom of the General Universal SmartSled. Data communication is specific for these ports.



*Both USB ports support KDC470/475 and phone simultaneous charging.
GUA_AM_20201217