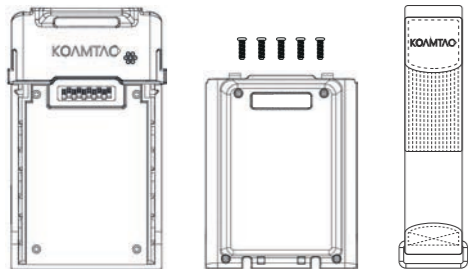


What's in the Box?

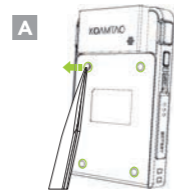
- 1 x Hand Strap Adaptor
- 1 x Hand Strap Module
- 1 x Hand Strap
- 4 x screws + 1 extra



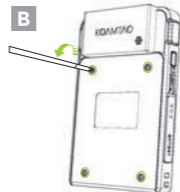
*KDC470/475 sold separately.
Tweezers and PH0 screwdriver (not included)

Hand Strap Module Assembly Instructions

1. Using tweezers, carefully remove all four (4) screw caps from back of KDC470/475. (A)



2. Remove all four (4) screws from back of KDC470/475. (B)



3. Remove cover plate from back of KDC470/475. (C)



4. Align screw holes of Hand Strap Adaptor with screw holes of KDC470/475. Use four (4) included screws to attach Hand Strap Adaptor to KDC470/475. (D)



Additional KDC470/475 Accessories:

- 1-Slot Charging Cradle
- 4-Slot Charging Cradle
- HF Companion
- 0.5W UHF Companion
- 1.0W UHF Companion
- Pistol Grip
- Extended Battery

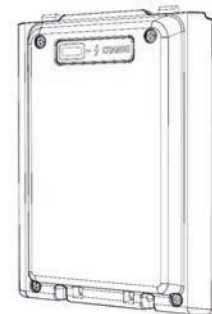
Visit our website for more information.

KOAMTAC

116 Village Blvd, Ste 305, Princeton, NJ 08540
+1 609-256-4700 [p](#) | +1 609-228-4373 [f](#)
info@koamtac.com | www.koamtac.com

KOAMTAC

KDC470/475 Hand Strap Assembly Manual



5. Align notch in top of Hand Strap Module with top notch of the Hand Strap Adaptor. (E)

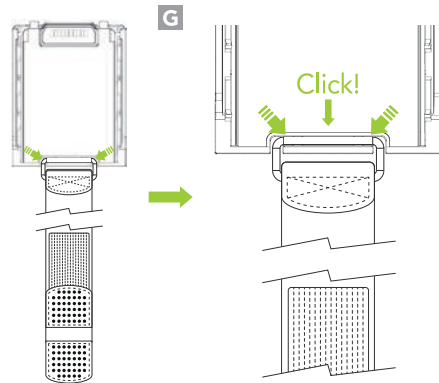


6. Slide the Hand Strap Module up until it clicks. (F)



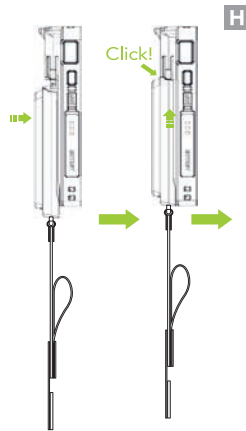
Attaching the Hand Strap

1. Place the metal ring on the Hand Strap into the groove at the bottom of the Hand Strap Module. Pull down until it clicks. (G)

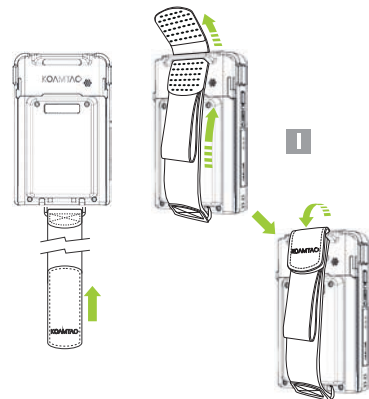


*Hook-and-loop fastener side up

2. Align the top notch of the Hand Strap Module with the top notch of the Hand Strap Adaptor. Push the Hand Strap Module upwards until it clicks. (H)



3. Lift bottom of hand strap to top and slide the hand strap through the loop at the top of the Adaptor. (I)



Removing Hand Strap Module

Disconnect the hook-and-loop fastener. Squeeze tabs on both sides of the Hand Strap Adaptor and slide the Hand Strap Module down. Pull the Hand Strap Module away from the Hand Strap Adaptor and KDC. (J)

