



KDC270 Charging Adaptor Installation Manual



Follow these same instructions for installing Adaptor with or without Bumper to charge KDC270 utilizing 4-slot Charging Cradle.

Additional KDC270 Accessories:

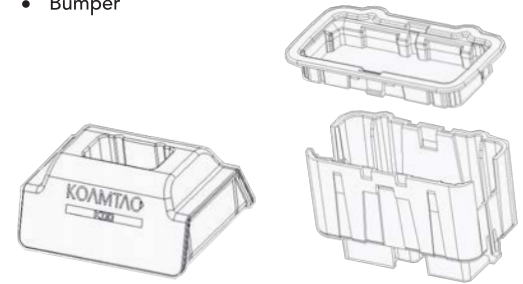
- Protective Boot
- Finger Trigger Glove
- Ring Scanner



116 Village Blvd, Ste 305, Princeton, NJ 08540
+1 609-256-4700 p | +1 609-228-4373 f
info@koamtac.com | www.koamtac.com

What's in the box?

- Charging Cradle
- Adaptor
- Bumper

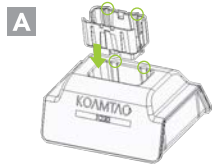


*KDC270 sold separately

Installation Instructions

For charging KDC270 **with** protective boot

1. Align ridges on Adaptor with those on Charging Cradle. Insert firmly, until you hear a click. (A,B)

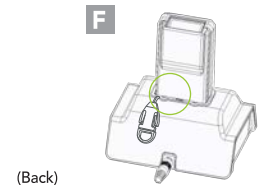


2. Insert KDC270 into Charging Cradle with Adaptor, ensuring KOAMTAC logos face same direction. (C,D)



Charging KDC270 with lanyard attached
(with or without protective boot)

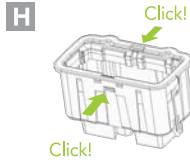
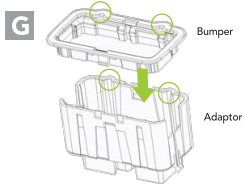
If lanyard is connected to KDC270, pull lanyard to back of KDC270 and align with ridge when inserting KDC270 into cradle. (E,F)



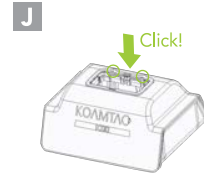
Installation Instructions

For charging KDC270 **without** protective boot

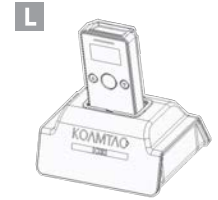
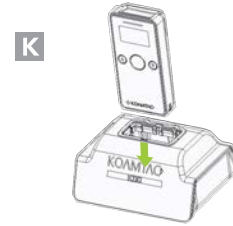
1. Align the ridges on bumper to the ridges on Adaptor.
Insert Bumper into Adaptor until you hear a click. (G,H)



2. Insert connected Bumper and Adaptor into the Charging Cradle firmly, until you hear a click. (I,J)

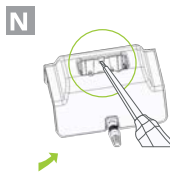
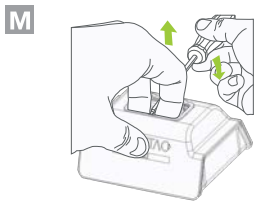


3. Insert KDC270 into Charging Cradle with Bumper and Adaptor, ensuring KOAMTAC logos face same direction. (K,L)

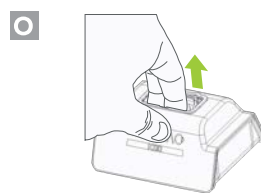


Removal Instructions

Remove Adaptor (without bumper) from Charging Cradle utilizing fingers and a standard (flat-head) screwdriver. (M,N)



Remove Bumper and Adaptor from Charging Cradle using fingers. (O)



Separating Bumper and Adaptor

Place standard (flat-head) screwdriver at bottom of connection point of Bumper and Adaptor. Push Bumper point in and up, then pull Bumper out of Adaptor. (P,Q)

