



KOAMTAC Fundamentals

Connecting your KDC to an Android Smartphone/Tablet

KOAMTAC Fundamentals

Connecting your KDC to an Android Smartphone/Tablet

You must pair your KDC to your Android device in order to connect your KDC. There are two options for Bluetooth pairing. Both options have the same result, choose an desired option from below.

Option A

Pairing your KDC to your Android Smartphone or Tablet

This method is recommended for first-time users or when you are only connecting a few KDC's.

Option B

Pairing your KDC to your Android Smartphone or Tablet by scanning a Special Bluetooth MAC Address barcode

This method is recommended for more advanced users or when your application or process calls for pairing one of many KDCs to one of many Android devices on a regular basis. Some Android devices DO NOT support this method and a change in KDC firmware would be necessary before moving forward with this method.

Please note: Your KDC is shipped from the factory in Serial Port Profile (SPP) mode. Both connection options within this document require your KDC to be in SPP mode. If you are unsure if your KDC has been configured in SPP, scan the barcodes below or follow the menu system for KDC equipped option shown below.

For laser-based models
KDC20/100/200/250/350L/410/415



6A000

SPP

For 2D imager models
KDC30/300/350C/420/425/450



TKMDC6A000.

SPP

or

Enter the
KDC menu

Select
BT Config

Select
Connect Device

Select
SPP

Select
Save & Exit

press



KOAMTAC Fundamentals

Connecting your KDC to an Android Smartphone/Tablet


Option A

Pairing your KDC to your Android Smartphone or Tablet

This method is recommended for first-time users or when you are only connecting a few KDC's.

Put your KDC into **Pairing mode**


For laser-based models
KDC20/100/200/250/350L/410/415



61001
Pairing


or

For 2D imager models
KDC30/300/350C/420/425/450




TMKDC61001.
Pairing


press →



Enter the
KDC menu



Select
BT Service



Select
Pairing

On your Android device, go to **Settings** → **Bluetooth**, find the KDC with which you want to pair and select it. Your KDC and Android Smartphone or Tablet are now communicating with each other.



Settings



Tap Bluetooth



Complete!



Download **KTSync** from Google Play at:

<https://play.google.com/store/apps/details?id=com.koamtac.ktsync>.

Open KTSync after it has installed and select the paired KDC and connect.

koamtac.com

KOAMTAC Fundamentals

Connecting your KDC to an Android Smartphone/Tablet

Option B

Pairing your KDC to your Android Smartphone or Tablet by scanning a Special Bluetooth MAC Address barcode

This method is recommended for more advanced users or when your application or process requires pairing one of many KDC devices to one of many Android devices on a regular basis.

Find the Bluetooth MAC Address of your Android Device



Create your Pairing Barcode

- Go to <http://www.terryburton.co.uk/barcodewriter/generator/>
- Enter the following information:

Symbology:	Code 128
Contents:	^FNC365<BluetoothAddress>
Options:	includetext parsefnc

<i>Required parameters</i>	
Symbology:	Code 128
Contents:	^FNC365 881FCALK15LM
Options:	includetext parsefnc
<i>Additional parameters</i>	
Translate:	50 50
Scale:	2 2
Rotate:	0
<input type="button" value="Make Barcode"/> (It will appear below)	

Replace highlighted text with your Bluetooth address from Step 1. Remove the colons and < > marks as shown.

- Click **Make Barcode**
- Download the image in **EPS, PNG or JPEG** format

KOAMTAC Fundamentals

Connecting your KDC to an Android Smartphone/Tablet

Option B (cont.)

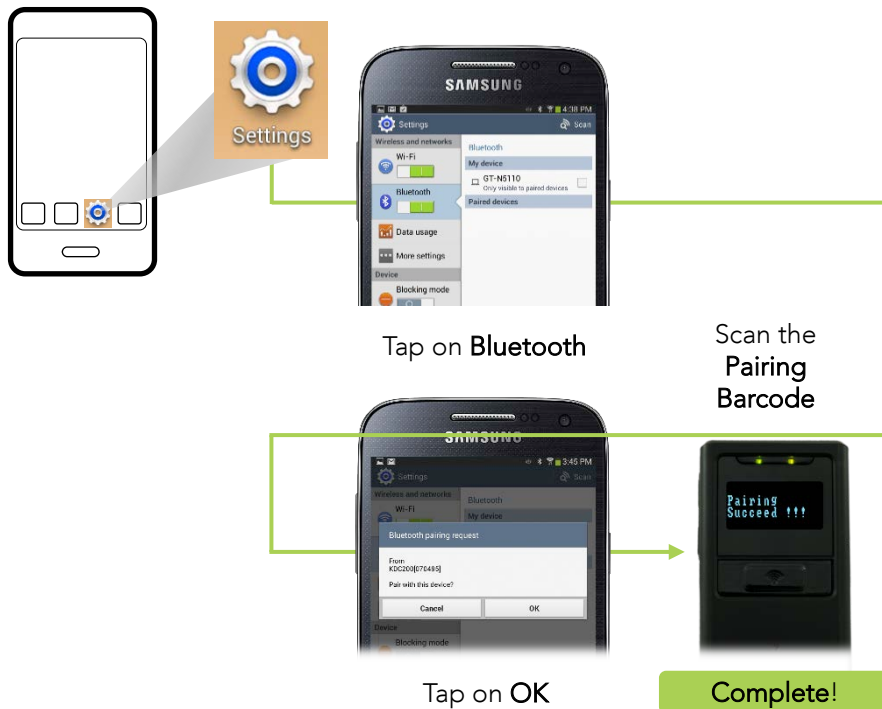
Connect your Android Smartphone or Tablet to your KDC by scanning a Special Bluetooth MAC Address barcode

Print your Pairing bar code

2D image-based barcode readers such as the KDC300, KDC420 series, and KDC350C models will read a printed barcode OR directly from an LCD screen.

Laser scanners, such as the KDC100, KDC200, KDC410 Series and KDC350L models are not designed to read from a screen and will only read the printed barcode.

Pair your KDC to your Android device by scanning the pairing barcode.



Pair your KDC to your Android device by scanning the pairing barcode.

Download **KTSync** from Google Play at:

<https://play.google.com/store/apps/details?id=com.koamtac.ktsync>.

Open KTSync after it has installed and select the paired KDC and connect.

KOAMTAC Fundamentals

Connecting your KDC to an Android Smartphone/Tablet

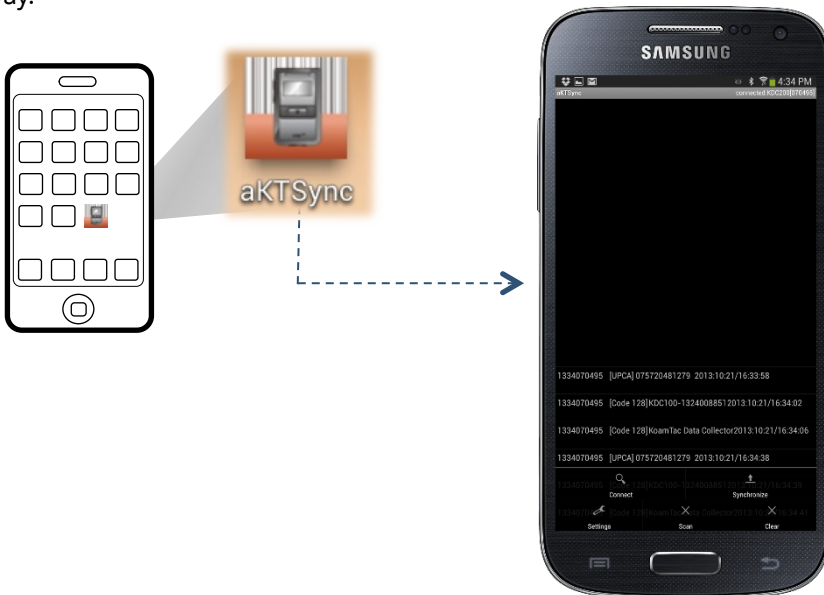
Scanning with aKTSync

Download KTSync from Google Play at:

<https://play.google.com/store/apps/details?id=com.koamtac.ktsync>

Open KTSync after it has installed and select the paired KDC and connect.

Press your **HOME** button instead of the **BACK** button to leave KTSync running in the background. Your KDC will stay connected and you can use the KTSync Keyboard this way.



KTSync Keyboard Options

Go into **Settings** → **Language and input** and change your Default Keyboard to the "KTSync Keyboard".

When a bar code is scanned while the KTSync Keyboard is active, the barcode data will go into the active App (as if you typed it).

Configure your data formatting settings in the KTSync App by pressing the **MENU** button on your Android device and selecting **Settings**.

